



EasyMesh
— Compatible —

AC1200 Dual Band Wi-Fi Router

Four Antennas for Faster AC
Wi-Fi and Greater Coverage

Archer C50



Dual-Band Wi-Fi
867 Mbps + 300
Mbps[†]



Router/ Access Point /
Range Extender Multiple
Modes



EasyMesh-Compatible
for Seamless Wi-Fi[△]



Faster Wi-Fi
with MU-MIMO[‡]



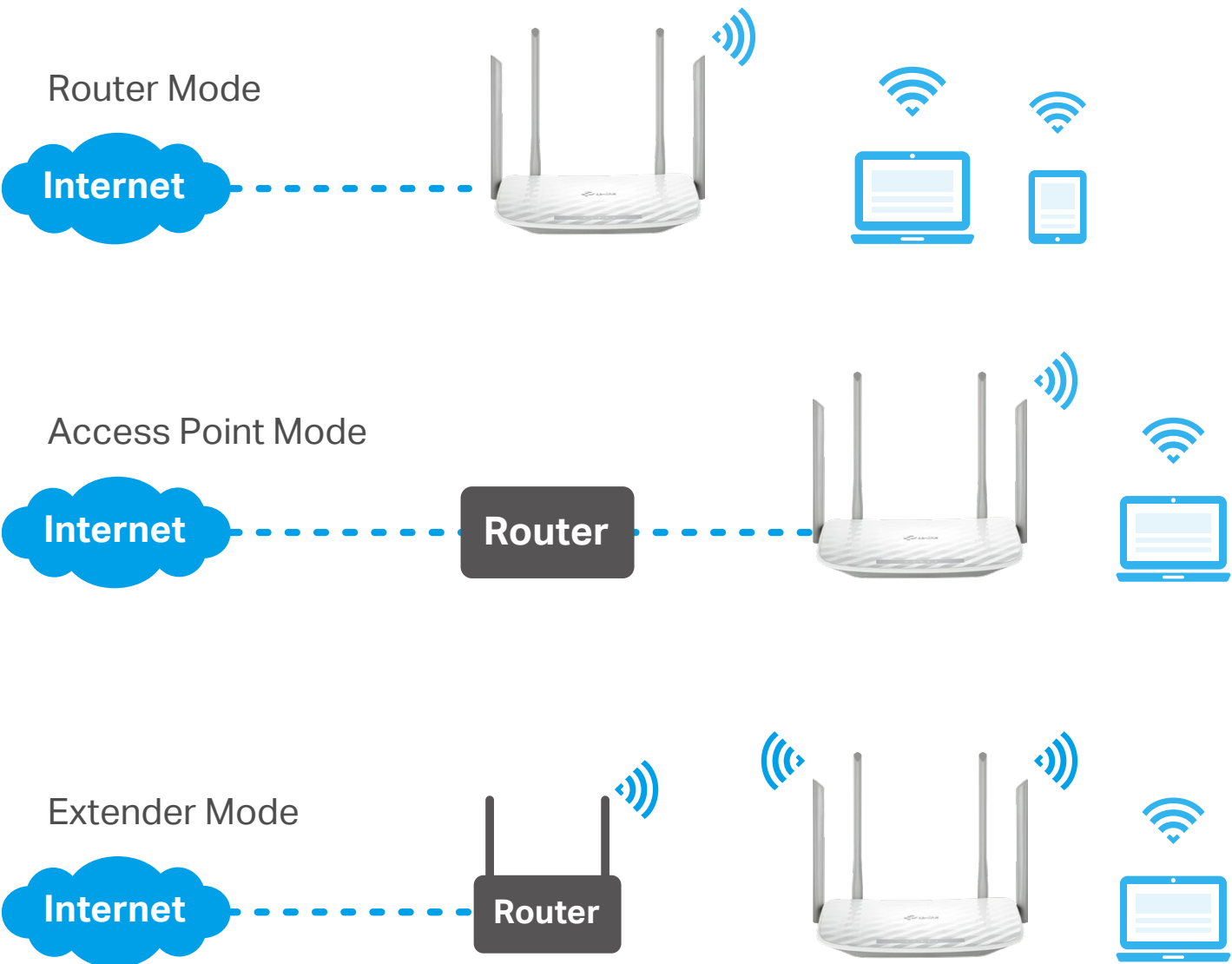
WPA3
Security[§]



Highlights

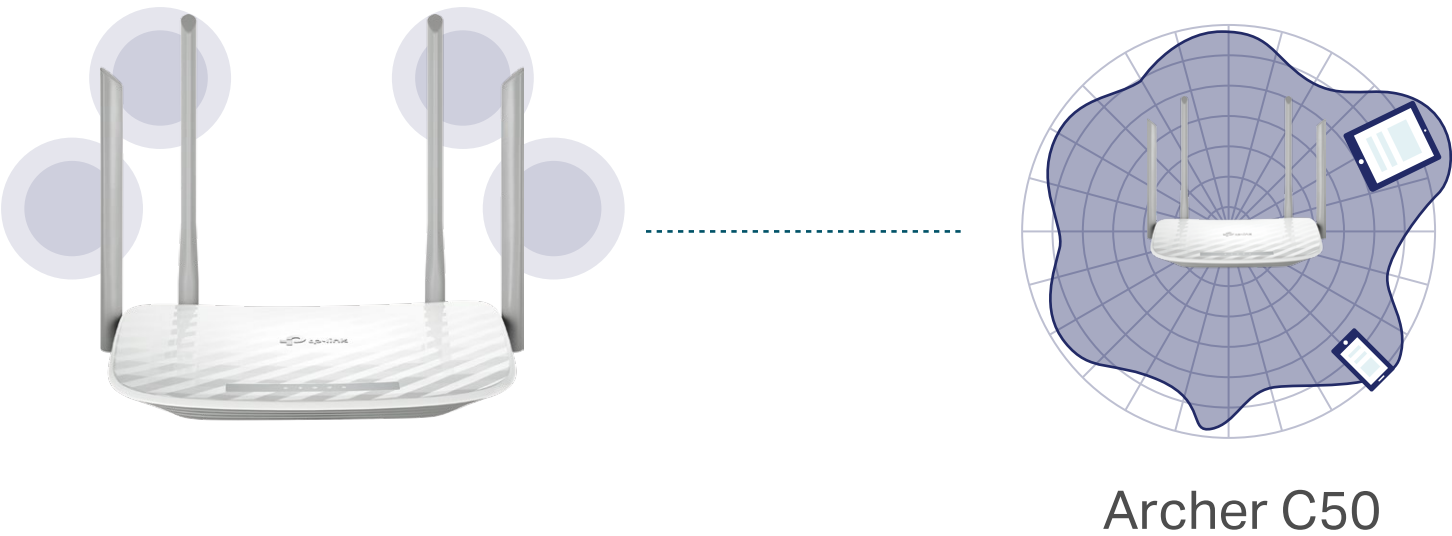
Multi-Mode Function

In addition to serving as a wireless router, this router can also function as a wireless access point or range extender, providing you with the flexibility you need in any situation. The mode can be easily setup in the web management page or Tether App.



4 Antennas & Beamforming for Maximum Coverage

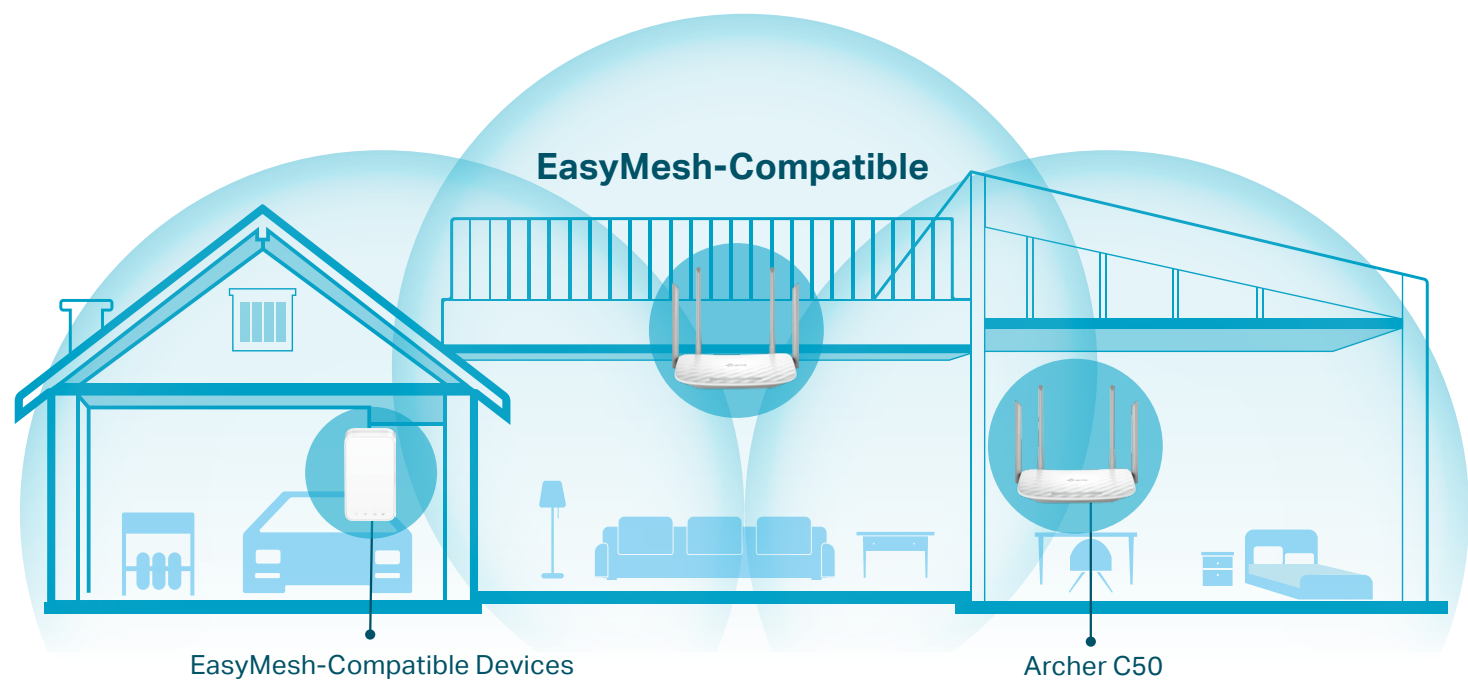
Equipped with four external antennas, Archer C50 creates stronger and more reliable networks for all to enjoy in your home. Beamforming technology concentrates the Wi-Fi signal towards your connected devices, providing better Wi-Fi range and network performance.



Highlights

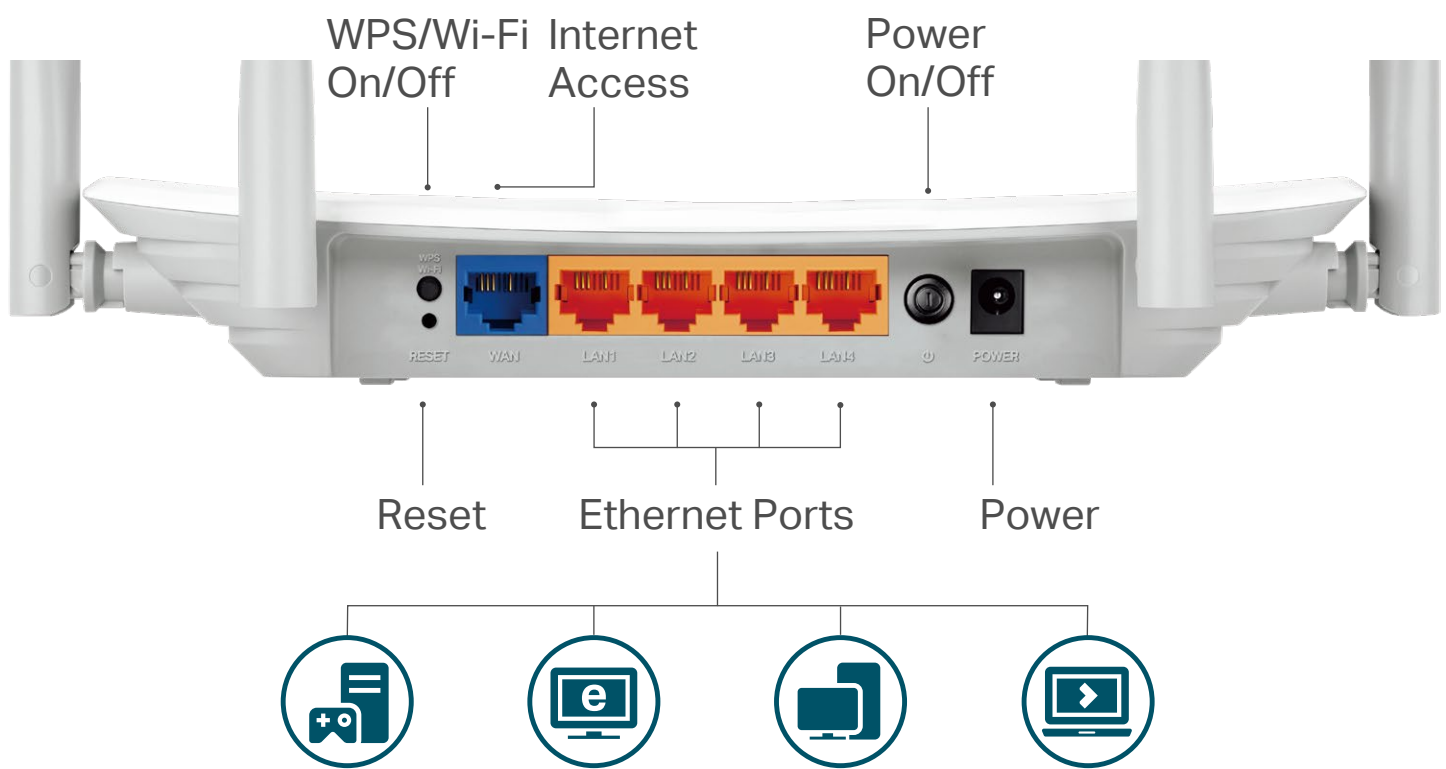
Convenient Mesh Networking^Δ

Mesh networking creates smooth, fast, stable roaming. Archer C50 can build an EasyMesh network with devices that use EasyMesh technology. Eliminate Wi-Fi dead zones, expand your network, and fill your entire home with high-speed Wi-Fi.



Fast Ethernet

Enjoy fast, reliable wired connections for gaming and streaming in the best quality.

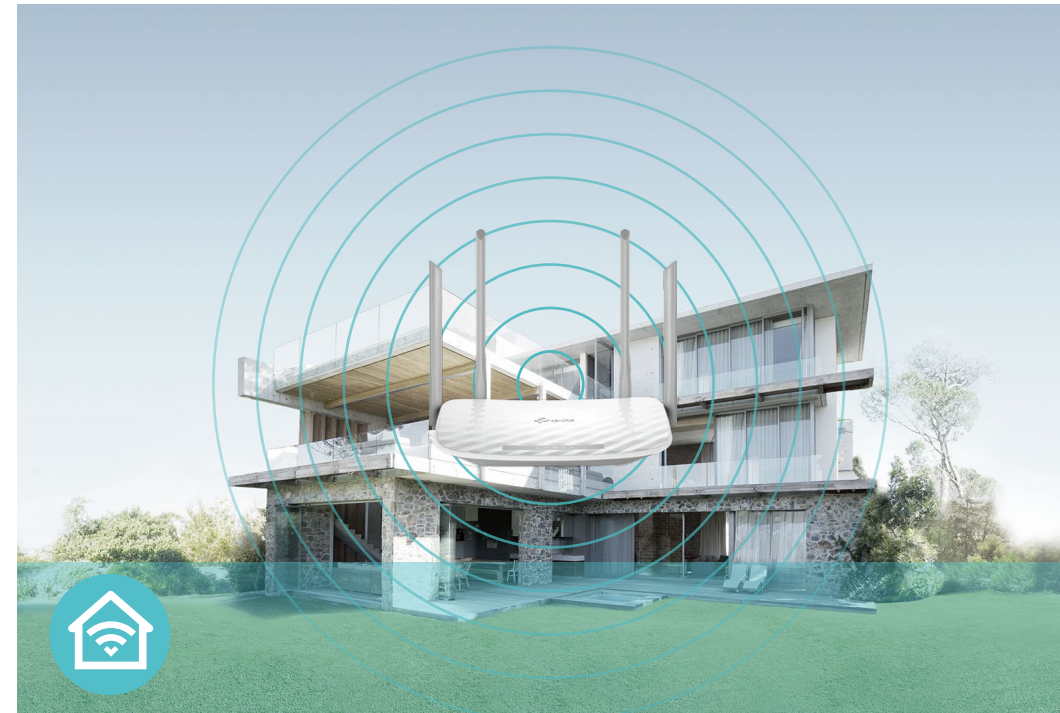


Features



Speed

- **802.11ac Technology** – Powered by 802.11ac Wi-Fi technology, Archer C50 creates a reliable, blazing-fast network.
- **Ultimate Wireless Speed** – 867 Mbps on 5 GHz + 300 Mbps on 2.4 GHz



Wi-Fi Range

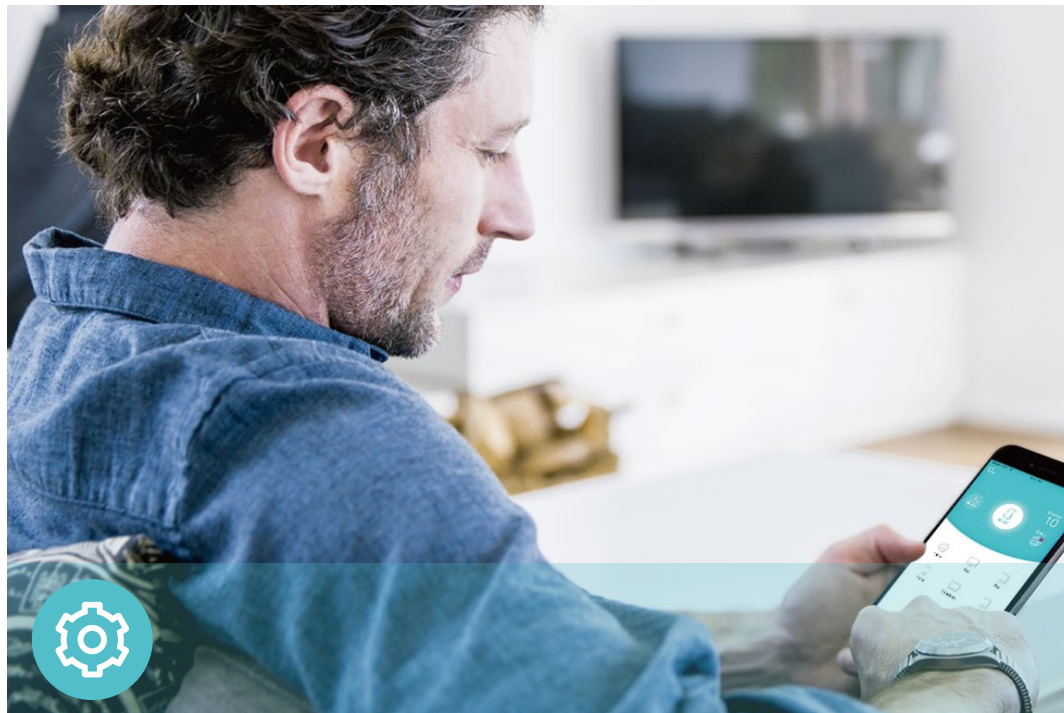
- **Ultimate Range Wi-Fi** – Four external antennas deliver a Wi-Fi signal to every corner of your home, making all of your connections more efficient and stable
- **Beamforming Technology** – Concentrates Wi-Fi signals towards individual devices to ensure stronger connections
- **Seamless EasyMesh Network** – Transfer between seamless whole-home Wi-Fi without any drops or lag and manage your whole network using a centralized panel



Reliability

- **Smart Connect** – Intelligently switches each device's connection to the optimum available Wi-Fi band
- **IoT Network** – Creates a dedicated wireless network to manage IoT devices together and improve their connectivity stability

Features



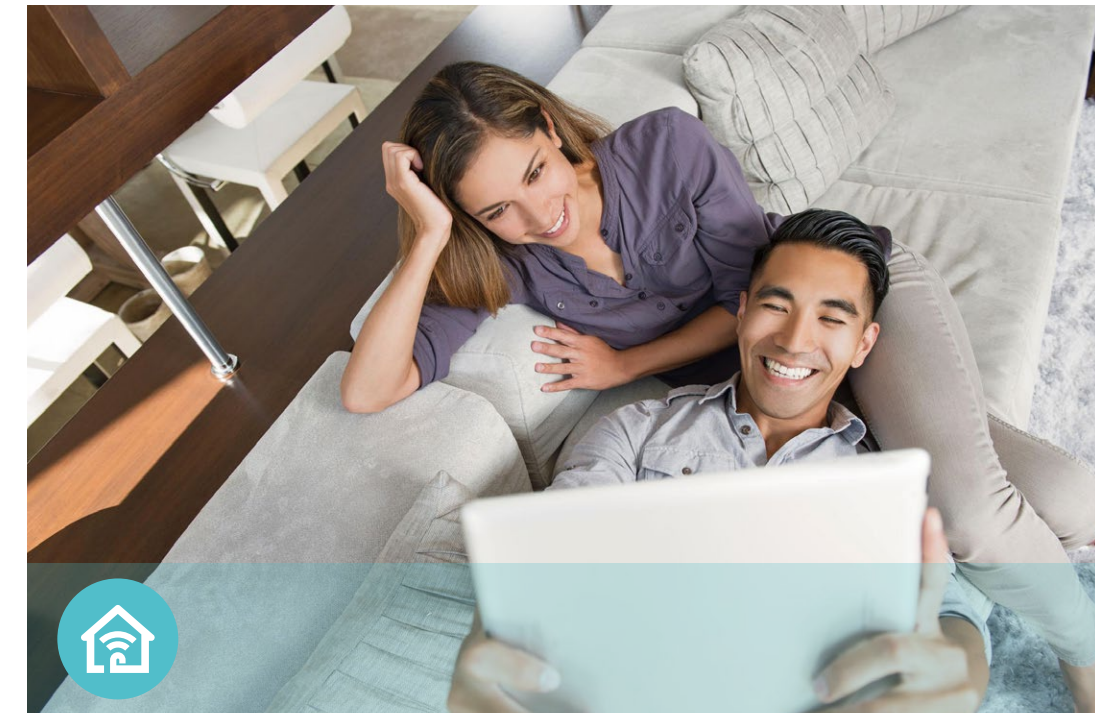
Easy Management

- Intuitive Web UI – Ensures quick and simple Installation without hassle
- Hassle-free Management with Tether App – Network management is made easy with the TP-Link Tether App, available on any Android and iOS device
- TP-Link ID – Binds the router to your TP-Link ID and other family member's accounts to manage the router



Security

- Encryptions for Secure Network – WPA, WPA2, and WPA3 encryptions provide active protection against security threats
- Guest Network – Keeps your main network secure by creating a separate network for friends and visitors
- Parental Controls – Restricts internet access time and contents for children devices



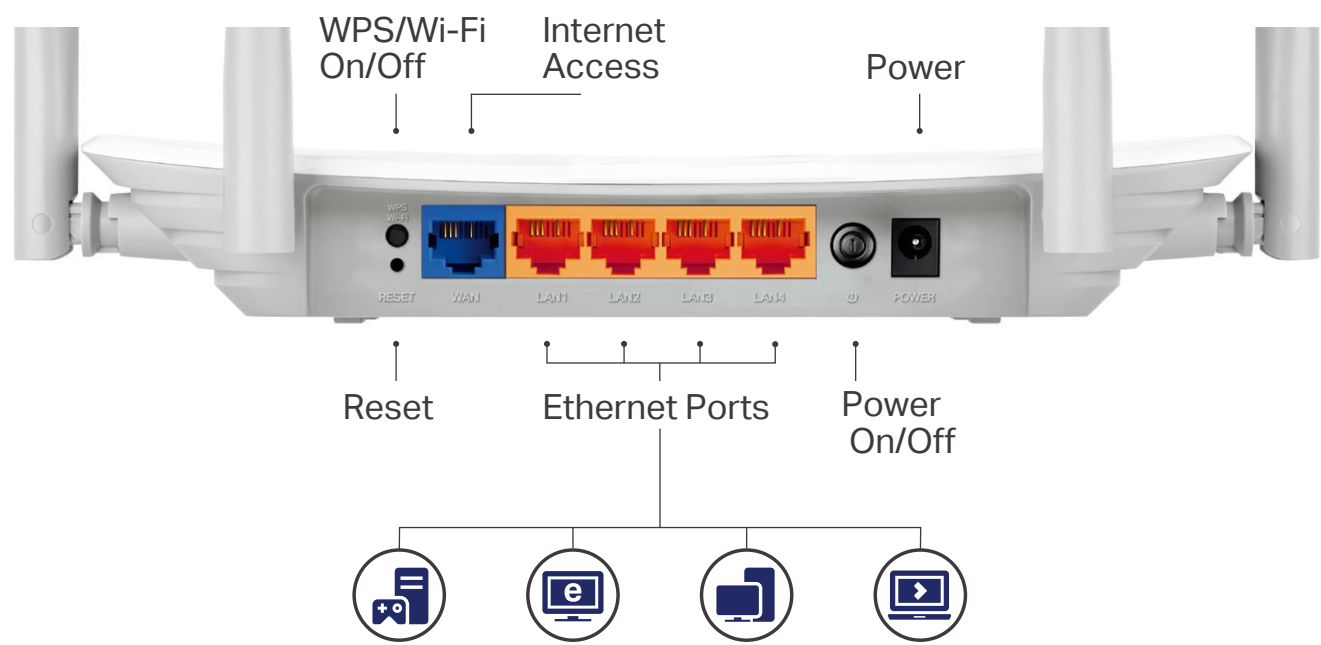
Ease of Use

- Wi-Fi Sharing – Easily shares your Wi-Fi access with a QR code
- Wi-Fi Schedule – The wireless network can be automatically off within a specified period when you do not need the wireless connection
- LED Control – Automatically turns your router's LEDs off within a specified period

Specifications

Hardware

- Ethernet Ports: 4*10/100 Mbps LAN Ports, 1*10/100 Mbps WAN Port
- Buttons: Reset Button, Power On/Off Button, WPS/Wi-Fi On/Off Button
- Antennas: 4 Fixed Omni Directional Antennas
- External Power Supply: 9VDC/0.85A
- Dimensions (W x D x H): 9.1 x 5.7 x 1.4 in. (230 x 144 x 35 mm)



Wireless

- Wireless Standards: IEEE 802.11ac/n/a 5 GHz, IEEE 802.11b/g/n 2.4 GHz
- Frequency: 2.4 GHz and 5 GHz
- Signal Rate:
 - 5 GHz: Up to 867 Mbps
 - 2.4 GHz: Up to 300 Mbps
- Transmission Power:
 - CE EIRP: <20dBm(2.4GHz) <23dBm(5GHz)
- Reception Sensitivity:
 - 5 GHz:
 - 11a 54M:-77dBm;
 - 11ac VHT20 MCS8:-72 dBm;
 - 11ac VHT40 MCS9:-68 dBm;
 - 11ac VHT80 MCS9:-63 dBm;
 - 2.4 GHz:
 - 11g 54M:-76 dBm;
 - 11n HT20 MCS7:-74 dBm;
 - 11n HT40 MCS7:-71 dBm;
- Wireless Function: Enable/Disable Wireless Radio, WMM, Wireless Schedule
- Wireless Security: WPA, WPA2, WPA3, WPA/WPA2-Enterprise (802.1x)

Specifications

Software

- Quality of Service: Device Prioritization
- WAN Type: Dynamic IP/Static IP/PPPoE(Dual Access)/PPTP(Dual Access)/L2TP(Dual Access)
- EasyMesh: Supported
- Management: Local Management, Remote Management
- DHCP: Server, DHCP Client List, Address Reservation
- NAT Forwarding: Port Forwarding, Port Triggering, UPnP, DMZ
- Dynamic DNS: DynDns, NO-IP, TP-Link
- Access Control: Allow List, Deny List
- Parental Controls: URL Filtering, Time Controls
- Firewall Security: SPI Firewall, IP and MAC Address Binding
- Protocols: IPv4, IPv6
- Guest Network: 2.4 GHz Guest Network, 5 GHz Guest Network

Others

- Certification
CE, RoHS
- System Requirements
Microsoft Edge, Firefox, Chrome, Safari, or other JavaScript-enabled browser

*You are recommended to use the latest version

Cable or DSL Modem (if needed)

Subscription with an internet service provider (for internet access)
- Environment
Operating Temperature: 0°C~40°C (32°F ~104°F)
Operating Humidity: 10%~90% non-condensing
- Package Contents
Wireless Router Archer C50

Power Adapter

RJ45 Ethernet Cable

Quick Installation Guide



For more information, please visit
https://www.tp-link.com/products/details/?model=Archer+C50_V6.2
or scan the QR code left

[†]Maximum wireless signal rates are the physical rates derived from IEEE Standard 802.11 specifications. Actual wireless data throughput and wireless coverage are not guaranteed and will vary as a result of network conditions, client limitations, and environmental factors, including building materials, obstacles, volume and density of traffic, and client location.

[†]Use of MU-MIMO requires clients to also support MU-MIMO.

[§]Use of WPA3 requires clients to also support WPA3.

^{*}Actual network speed may be limited by the rate of the product's Ethernet WAN or LAN port, the rate supported by the network cable, Internet service provider factors and other environmental conditions.

[^]TP-Link EasyMesh-compatible products can network with other devices that use EasyMesh. Failed connections may be due to firmware conflicts of different vendors. The EasyMesh-Compatible function is still being developed on some models and will be supported in subsequent software updates.

©2024 TP-Link